

*Disclaimer: This is a machine generated PDF of selected content from our databases. This functionality is provided solely for your convenience and is in no way intended to replace original scanned PDF. Neither Cengage Learning nor its licensors make any representations or warranties with respect to the machine generated PDF. The PDF is automatically generated "AS IS" and "AS AVAILABLE" and are not retained in our systems. CENGAGE LEARNING AND ITS LICENSORS SPECIFICALLY DISCLAIM ANY AND ALL EXPRESS OR IMPLIED WARRANTIES, INCLUDING WITHOUT LIMITATION, ANY WARRANTIES FOR AVAILABILITY, ACCURACY, TIMELINESS, COMPLETENESS, NON-INFRINGEMENT, MERCHANTABILITY OR FITNESS FOR A PARTICULAR PURPOSE. Your use of the machine generated PDF is subject to all use restrictions contained in The Cengage Learning Subscription and License Agreement and/or the Gale In Context: High School Terms and Conditions and by using the machine generated PDF functionality you agree to forgo any and all claims against Cengage Learning or its licensors for your use of the machine generated PDF functionality and any output derived therefrom.*

## This depiction of a black Madonna and Child is found along a street in Cartagena, Colombia.

**Editor:** Thomas Riggs

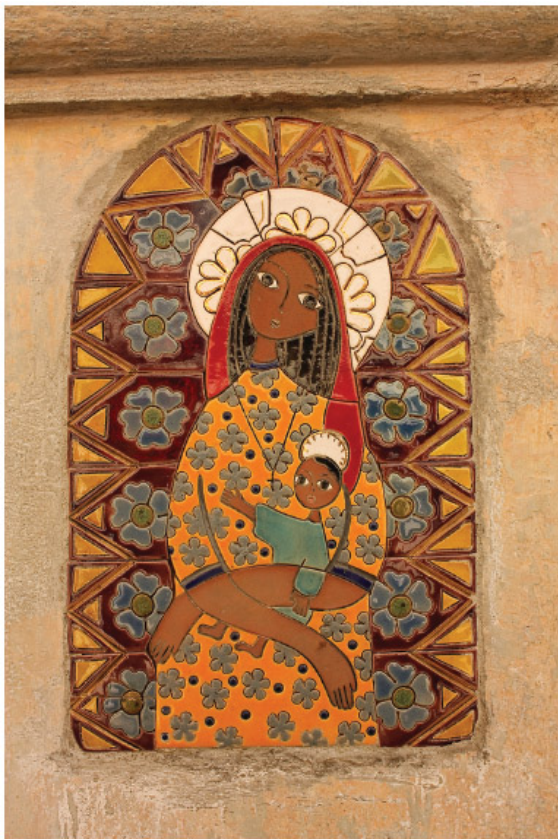
**Date:** 2015

**From:** Worldmark Encyclopedia of Religious Practices(Vol. 2: *Countries, Afghanistan to Ghana*. 2<sup>nd</sup> ed.)

**Publisher:** Gale, a Cengage Company

**Document Type:** Photograph

**Content Level:** (Level 4)



This depiction of a black Madonna and Child is found along a street in Cartagena, Colombia.

© TONIFLAP/SHUTTERSTOCK.COM.

This image may be used for personal, non-commercial purposes only.

**Full Text:** COPYRIGHT 2015 Gale, Cengage Learning

**Source Citation** (MLA 8th Edition)

"This depiction of a black Madonna and Child is found along a street in Cartagena, Colombia." *Worldmark Encyclopedia of Religious Practices*, edited by Thomas Riggs, 2nd ed., vol. 2: *Countries, Afghanistan to Ghana*, Gale, 2015. *Gale In Context: High School*, <https://link-gale-com.ezproxy.lapl.org/apps/doc/PC3602687289/SUIC?u=lapl&sid=SUIC&xid=438543f2>. Accessed 6 Jan. 2020.

**Gale Document Number:** GALE|PC3602687289